



Mend Collection

**Mannington**  
COMMERCIAL



**Cover: Tailored Mends** (Modular) Renewed Thread 11609 and Tailor's Touch 95613, **Carpet Installation** – Vertical Ashlar  
**Above: Renewed Refinement** (Modular) Renewed Thread 11609, **Carpet Installation** – Vertical Ashlar





**Patchwork Panache** (Modular) Handcraft Vibe 13606, **Carpet Installation** – Vertical Ashlar



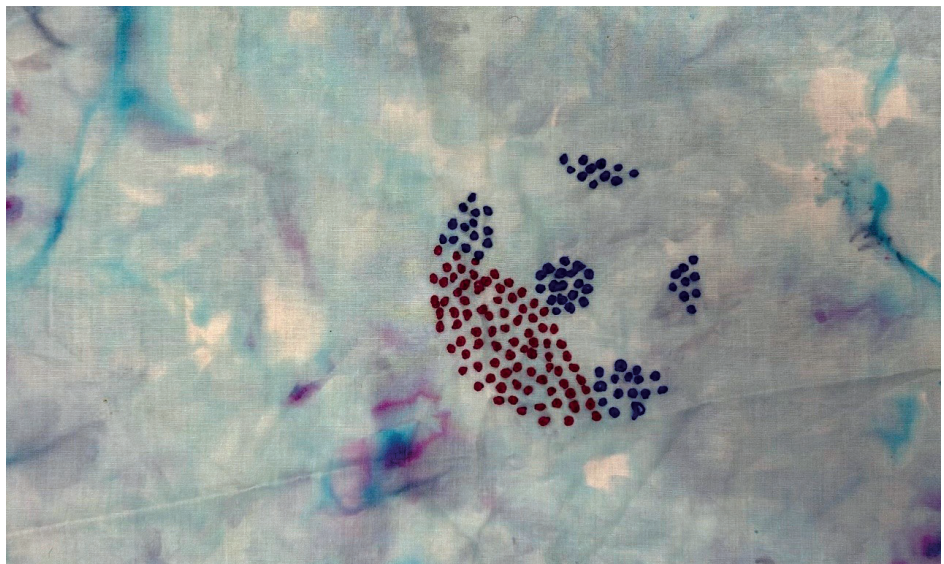
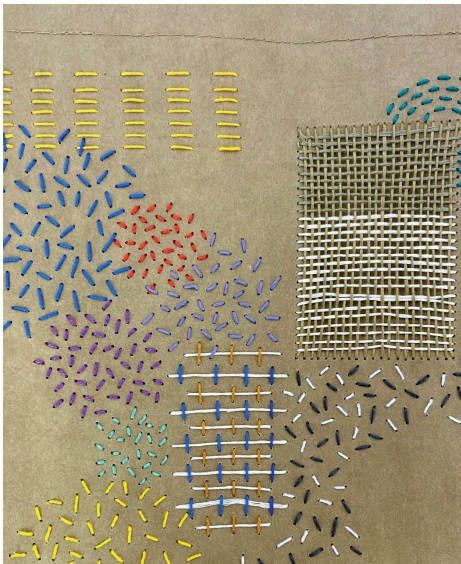
**Tailored Mends** (Modular) Renewed Thread Vibe 11610, **Carpet Installation** – Vertical Ashlar



**Patchwork Panache** (Modular) Renewed Thread Vibe 11610, **Carpet Installation** – Vertical Ashlar

## Breathe New Life Into Your Space

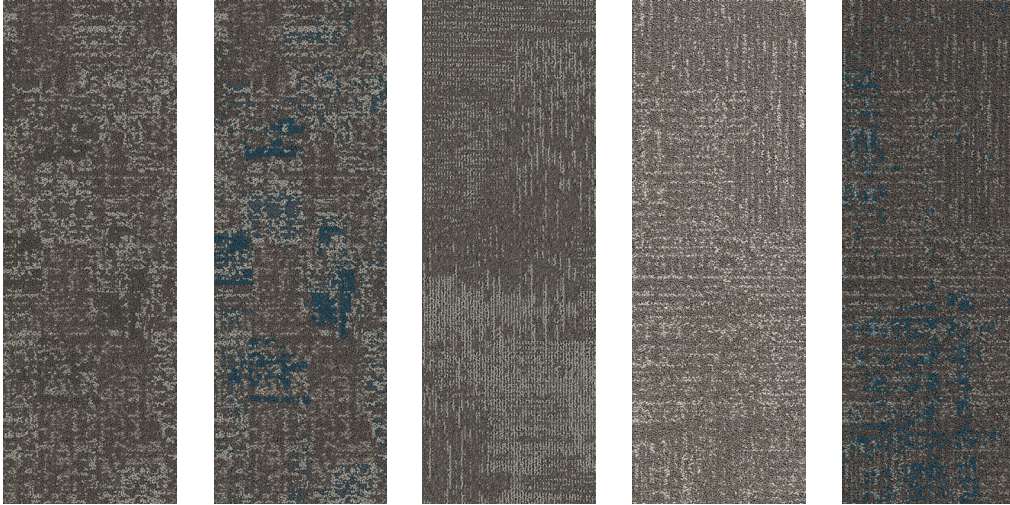
Inspired by the timeless practice of mending, Mend celebrates the beauty of imperfection and the craftsmanship required to breathe new life into cherished fabrics. This collection began as an exploration into the rich tapestry of mending art, which encouraged us to re-imagine how we approach design. The result is a collection that embraces authenticity, using layers of texture and color to transform flaws into a visually rich modern design for your space. In a world that often emphasizes flawless exteriors, Mend evokes a sense of warmth, nostalgia, and the timeless charm of handcrafted elegance.



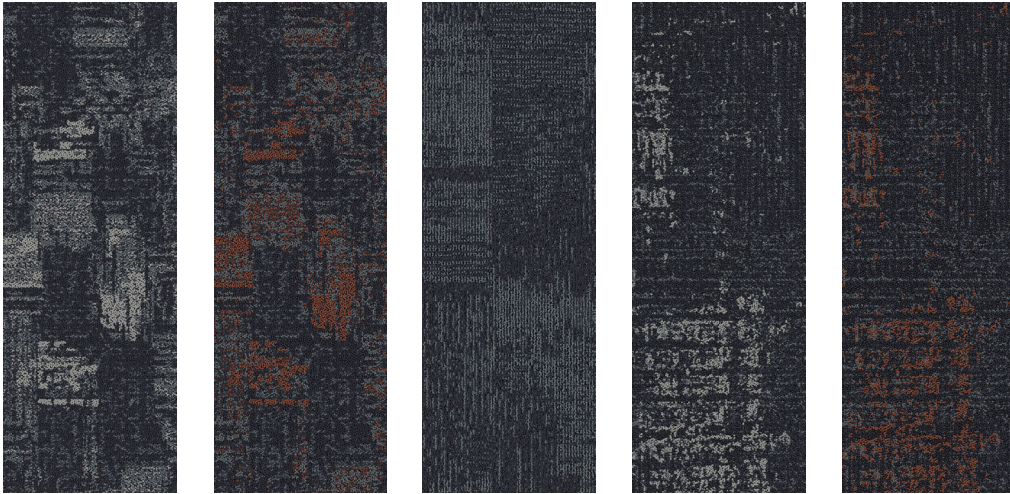


**Patchwork Ponache** (Modular) Chic Revival 35615 and **Renewed Refinement** (Modular) Chic Revival 35615,  
**Carpet Installation** - Vertical Ashlar

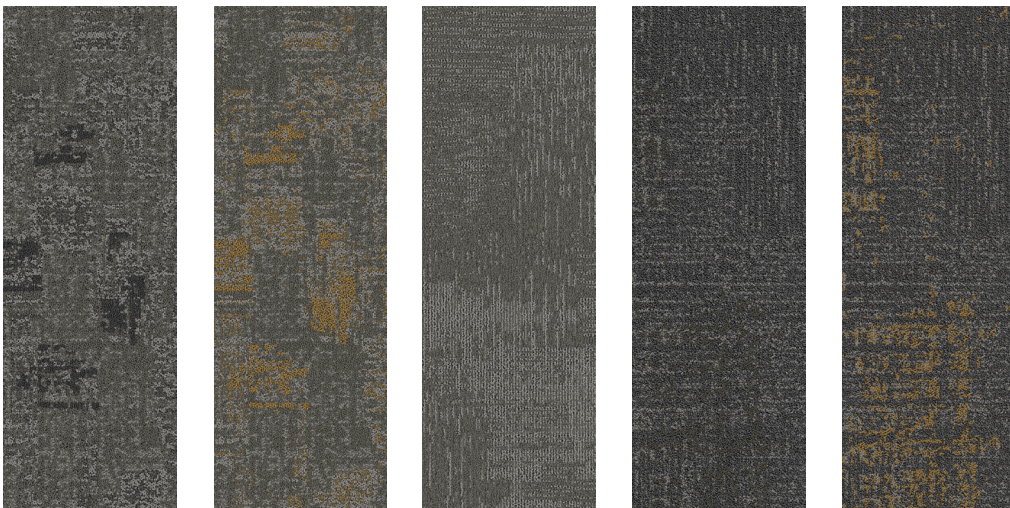
Meet the Collection



Artistry (83603) and Artistry Vibe (83604)

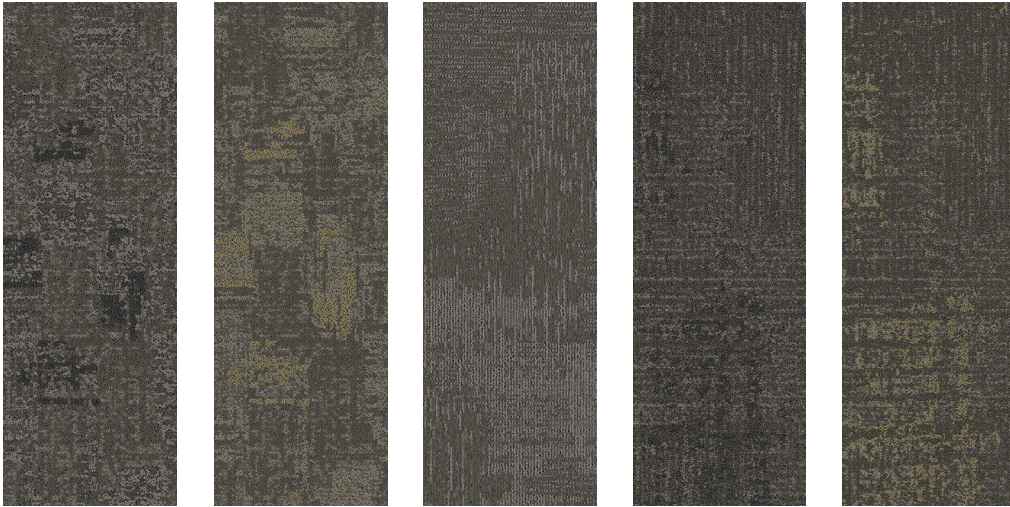


Chic Revivals (35615) and Chic Revivals Vibe (35616)



Crafted Renewal (14611) and Crafted Renewal Vibe (14612)

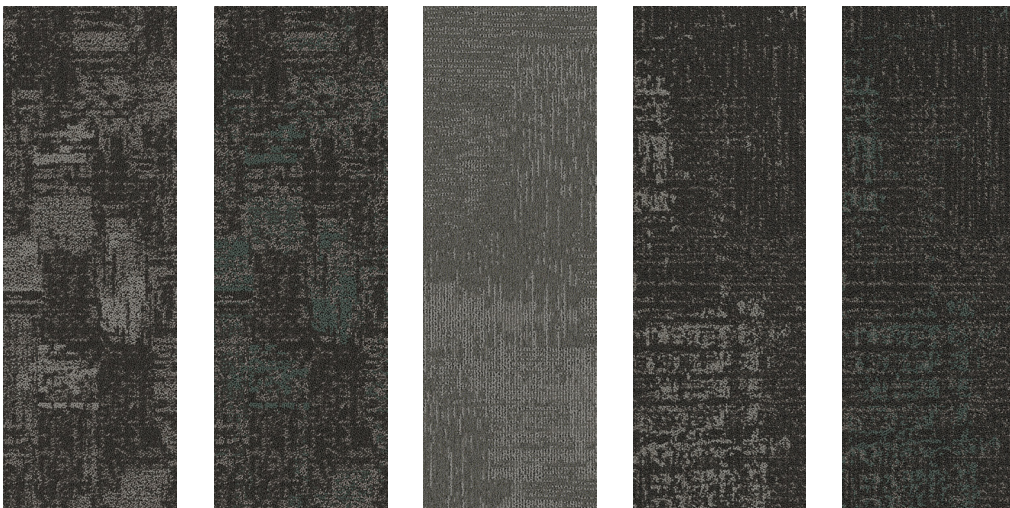
Meet the Collection



Handcraft (13605) and Handcraft Vibe (13606)

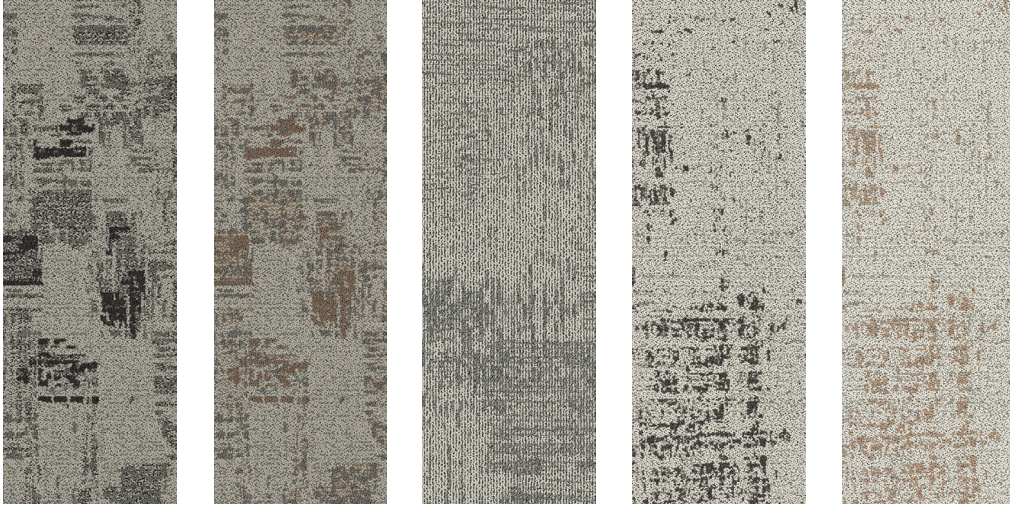


Heritage (82601) and Heritage Vibe (82602)

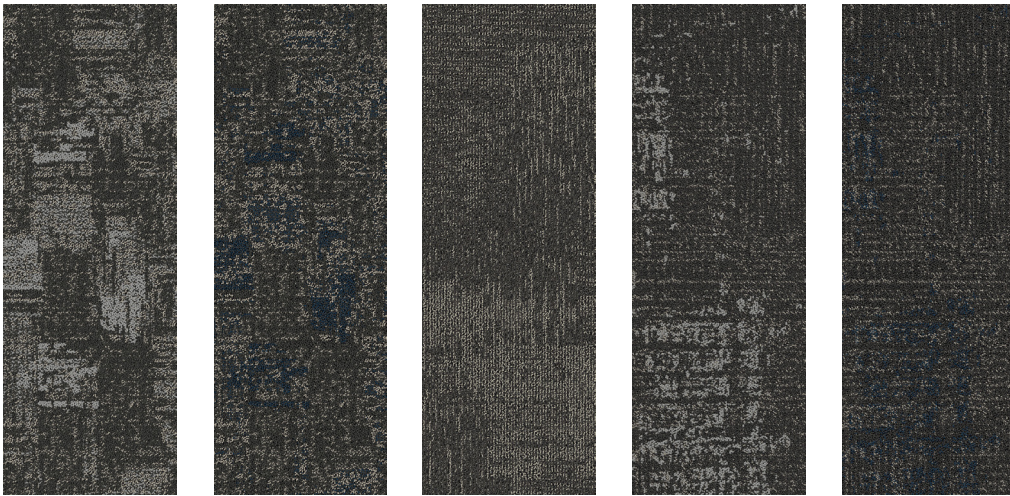


Mended Marvels (85607) and Mended Marvels Vibe (85608)

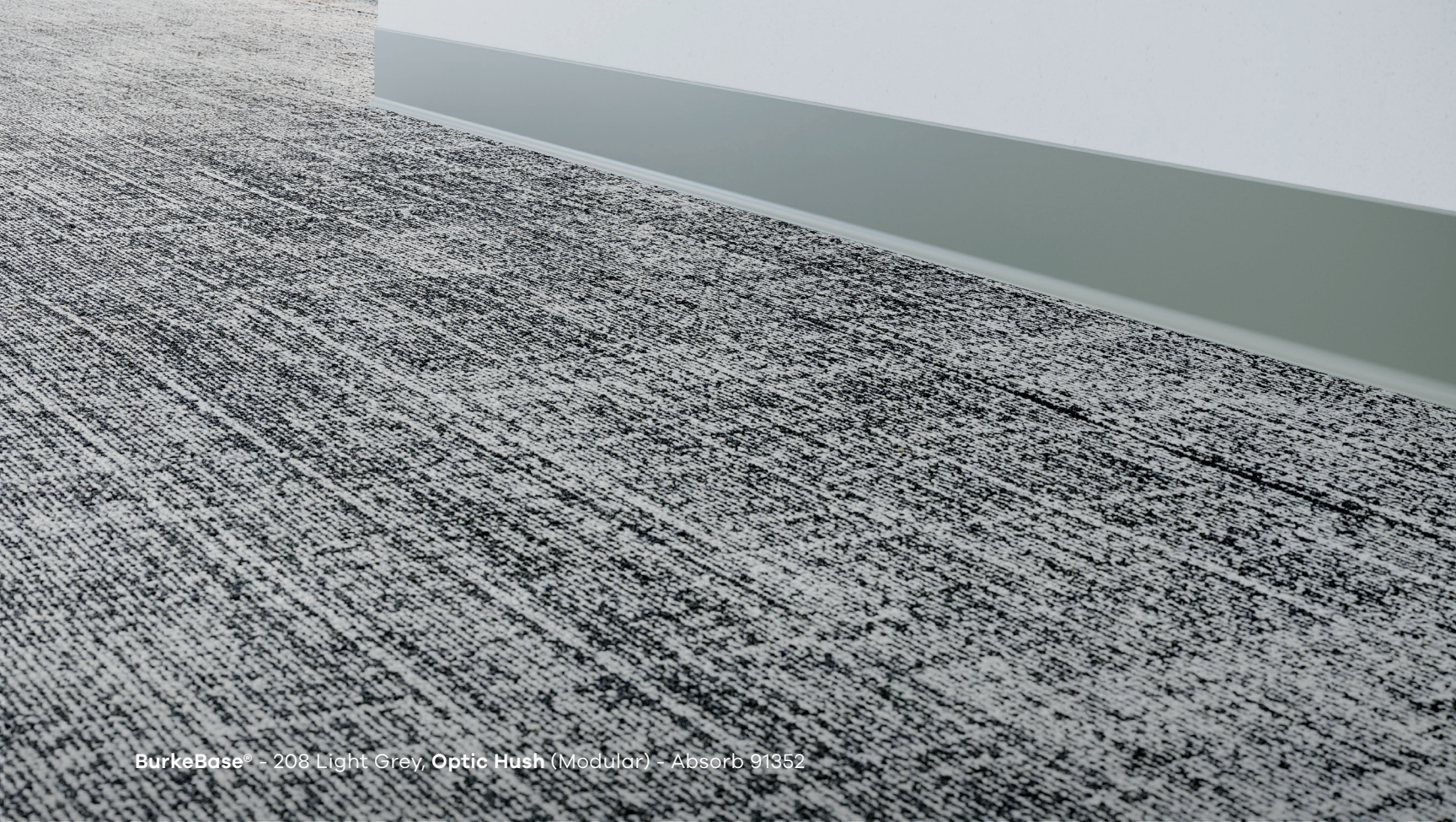
Meet the Collection



Renewed Thread (11609) and Renewed Thread Vibe (11610)



Tailor's Touch (95613) and Tailor's Touch Vibe (95614)



BurkeBase® - 208 Light Grey, Optic Hush (Modular) - Absorb 91352

Available Profile Heights	BurkeBase® Premium TS Molded 1/8"	BurkeBase® Type TP 1/8"	BurkeBase® Type TV 1/8"	BurkeBase® Type TV .080"
4" (102 mm)		2.5" (64 mm)	2.5" (64 mm)	2.5" (64 mm)
6" (152 mm)		4" (102 mm)	4" (102 mm)	4" (102 mm)
		4.5" (114 mm)	4.5" (114 mm)	6" (152 mm)
		6" (152 mm)	6" (152 mm)	
	Coved	Coved or Toeless	Coved or Toeless	Coved or Toeless

**Warranty**

This product is backed by our Limited 5-Year Commercial Warranty.

**Corners**

BurkeBase® Premium Type TS factory molded corners are available with 4" and 6" coved corners. Must be ordered at time of wall base order to ensure color match.

BurkeBase® Type TP/TV pre-formed corners are available in all profile heights. Must be ordered at time of wall base order to ensure color match.

**Custom Colors**

Minimums apply.

Please make final selection for all colors from actual product samples.

For samples and information, visit [manningtoncommercial.com](http://manningtoncommercial.com) or call 800.241.2262.

The molecular strength of type 6,6 nylon delivers greater resilience against matting and resists abrasive wear, keeping carpet looking better longer.

### Easier to Maintain

- ✔ XGUARD® Stain Resistant Technology provides long-term stain resistance for our space dye products.
- ✔ ColorSafe® Bleach Resistant Technology resists color fade-out from bleach spills for our space dye products.
- ✔ Moisture-barrier backings are built to withstand aggressive wet cleanings.

### Sustainable Solutions

- ✔ Supported with third party verified EPDs and HPDs.
- ✔ Infinity® 2 Modular and rEvolve® II backings are NSF/ANSI 140 Gold Certified and contain recycled content.
- ✔ Recognizing the impact that the built environment can have on Earth's climate and health, Mannington Commercial is improving operations and offsetting cradle-to-gate embodied carbon by 105% on this collection, as part of our commitment to helping customers take positive action through their projects.

### Backing Advantages

- ✔ Infinity® 2 and rEvolve® II Modular backings provide exceptional performance with a moisture barrier as well as superior tuft bind and dimensional stability with a limited lifetime warranty.
- ✔ rEvolve® II is a PVC-free modular backing. For additional backing options please visit our website.

### TARR

- ✔ Mend Collection carpet was specifically designed with a 3.0 TARR rating for heavy use environments with substantial foot traffic. This includes conference rooms, open office areas and classrooms. Our TARR rating is tested and verified by an independent lab.

**Proven by Third-Party Testing** | Every carpet we make at Mannington Commercial is third-party tested and proven to exceed industry standards in appearance retention, texture retention, fire safety factors and static generation, and our modular carpet exceeds industry standards in dimensional stability—so you can be sure that the carpet you specify will perform for years to come.



## No Moisture Testing Required\*

Solutions crafted for high-moisture conditions. Defeat moisture issues with carpet backings that do not require moisture testing\*.

We have solutions for broadloom and modular carpet to make moisture worries evaporate. From backing options to adhesives to a dry installation system, explore solutions that defeat moisture concerns while enhancing the performance of your floor.



	Infinity 2 Pressure Sensitive Adhesive	XpressStep™ Spray Adhesive	FreLock Tabs	Integra-2 Adhesive	Ultra Adhesive
Infinity® 2 Modular Backing	✓	✓	✓		
Infinity® 2 MG Modular Backing	✓	✓	✓		
Infinity® 2 MG Cushion Modular Backing	✓	✓			
rEvolve® II PVC-Free Modular Backing	✓	✓			
Integra® HP Broadloom Backing				✓	
UltraBac® RE Broadloom Backing					✓

\* Assumes intact vapor barrier, no standing water or stained concrete, no hydrostatic pressure, and for our broadloom backings (Integra® HP and UltraBac® RE) pH levels must never exceed 10. Please refer to our installation instructions for further details.



### Design Solutions

Whether you're looking for design support from the start of a project or in the final phase, Mannington's Design Solutions team can help. Our team of designers is here to support you, our customers, through every step of the design process, from concept to installation.

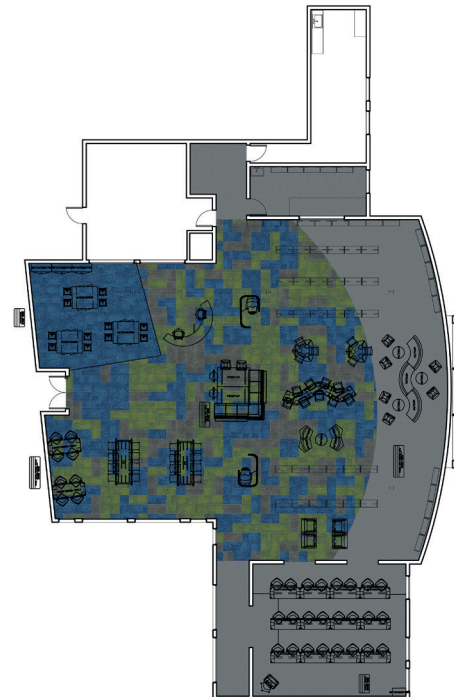
---

### Your Vision Realized

Our team of designers with diverse backgrounds in interior design, graphic design and textile design will work with you to provide solutions, knowledge and options to simplify the design process and bring your vision to life.

### Deliverables

- > Product Palettes
- > 2D and 3D Renderings
- > Composites
- > Configurations
- > Finished Plans
- > Rendered Floor Plan
- > Estimates
- > Installation Diagrams
- > Revit Files
- > Construction Documents



## Mend Collection

Style	Sizes	Face Weight	Colors
Patchwork Panache	12 x 36 (30.48 X 91.44 cm)	19 oz/yd <sup>2</sup> (644 g/m <sup>2</sup> )	16
Renewed Refinement	12 x 36 (30.48 X 91.44 cm)	17 oz/yd <sup>2</sup> (576 g/m <sup>2</sup> )	8
Tailored Mends	12 x 36 (30.48 X 91.44 cm)	19 oz/yd <sup>2</sup> (644 g/m <sup>2</sup> )	16

### Testing

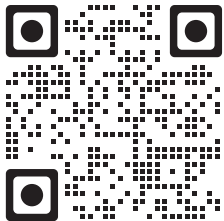
Dimensional Stability (Aachen Test)	Passes
Electrostatic Propensity (AATCC 134)	Less than 3.0 kV
Radiant Panel (ASTM E648)	≥ 0.45 watts/cm <sup>2</sup> , Passes (Class 1)
Smoke Density (ASTM E662)	≤ 450-Passes
Methenamine Pill Test (ASTM D2859)	Passes
Hexapod (ASTM D5252) TARR Rating	3.0

### Environmental Data

NSF/ANSI 140 Certification	Infinity 2 Modular - Gold / rEvolve II Modular - Gold
Recycled Content	Contains Recycled Content
Indoor Air Quality	CRI Green Label Plus Certified
Product Declarations	Third Party Verified EPD, HPD
Carbon Offset	105% Cradle to Gate (A1 - A3), visit website for more information
LEED Scoreboard	May Contribute to LEED credits: Building Product Disclosure & Optimization - EPDs Building Product Disclosure & Optimization - Sourcing Raw Materials Building Product Disclosure & Optimization - Material Ingredients; IEQc2 - Low Emitting Materials
mindful MATERIALS	Visit <a href="http://mindfulmaterials.com">mindfulmaterials.com</a> for current transparency information.
Manufacturing	Calhoun, Georgia (USA) - ISO 14001 Certified, +Vantage Vinyl Verified Silver

### Warranty

Limited Lifetime Wear & Backing  
 Limited 15-Year XGUARD® Stain Resistant  
 Limited 15-Year ColorSafe® Bleach Resistant



View full collection specs.

- Specifications are based on averages from normal manufacturing tolerances. Such variations do not affect product performance.
- Protective chair pads are recommended under office chairs with roller casters to preserve appearance and avoid premature wear.
- As with all quality carpets, slight variation in color may occur from dye lot to dye lot.
- Backing or other materials may be changed without prior notice when shortages occur or when technological advancements provide improved product performance.
- This product is intended solely for use as an indoor floor covering and is not recommended or sold for any other purpose.
- The inherent characteristics of geometric linear patterns can result in double-dark or double-light lines at the seam and to some extent pattern run-off or bias. This is not a manufacturing defect, and as such, should be considered when selecting a modular carpet installation method.
- Please make your final selection from an actual swatch. To order samples, go to [manningtoncommercial.com](http://manningtoncommercial.com) or call 800.241.2262

GLUE DOWN