



Studio Loop Collection

Mannington
COMMERCIAL

Unique. Warm. Playful.

Studio Loop is a modern tribute to the craft of punch needle rug hooking--an expressive, looped textile technique rooted in 19th-century North America. Inspired by its rich history of creativity, resilience, and hand-made artistry, this collection reinterprets the rhythm and tactility of the original craft into playful, textural carpet tiles designed for today's dynamic office environments.







Cover: **Sketchflow** (Modular) – Chamomile 81223; **Sketchflow** (Modular) – Chamomile Vibe 81224;
Carpet Installation – Herringbone

Above: **Sketchflow** (Modular) – Fennel 81225; **Sketchflow** (Modular) – Fennel Vibe 81226;
Carpet Installation – Vertical Ashlar
Photography Reflects a Random Install Mixed in Field



Loopfield (Modular) – Cutch 94221, **Carpet Installation** – Vertical Ashlar



Sketchflow (Modular) – Chamomile 81223; **Sketchflow** (Modular) – Chamomile Vibe 81224;
Amble (Modular) – Catch 94221;
Carpet Installation – Vertical Ashlar
Photography Reflects a Random Install Mixed in Field





Loopfield (Modular) – Chamomile



Amble (Modular) – Chamomile

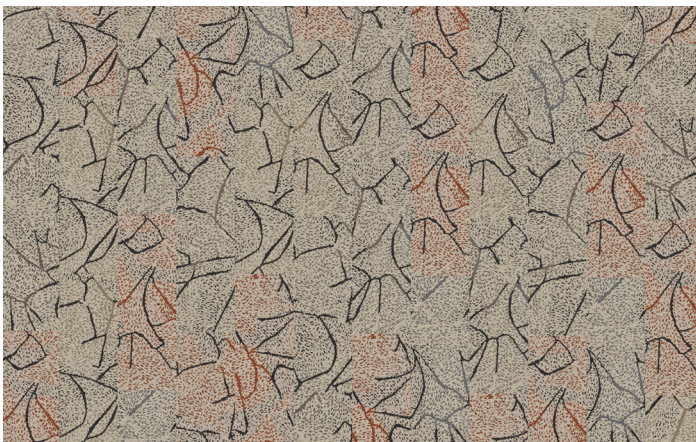
The patterns in our Studio Loop collection are designed as slow compositions of color and texture. A layered gradient unfolds across a generous 6' repeat, allowing hue to drift, overlap, and soften as it moves through the pattern. When installed, each plank naturally finds its place, creating gentle color pools and a relaxed, organic wash across the floor—no rigid layout required. The result is a surface that feels intuitive and effortless, delivering visual richness, natural variation, and design freedom with every installation.



Grooveform (Modular) – Chamomile



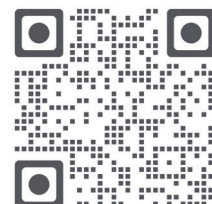
Sketchflow (Modular) – Chamomile

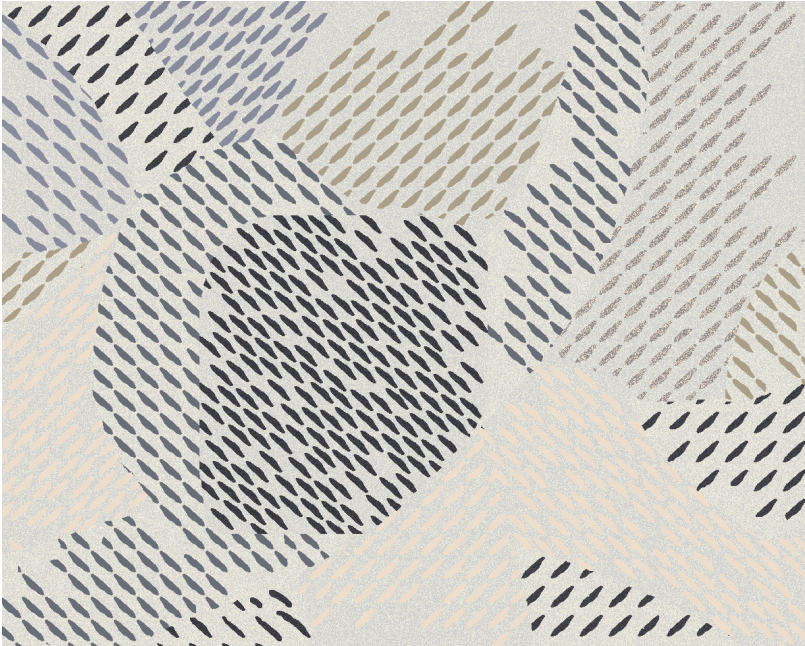


Sketchflow (Modular) – Chamomile
Sketchflow (Modular) – Chamomile Vibe

A flowing gradient of 70% Chamomile creates natural variation, while a subtle accent hue of 30% Chamomile adds a fresh, modern lift to the space.

Scan here for our
Overhead and
Installation Guide





Customize your own Studio Loop-inspired rug. With an extensive selection of yarn colors and a variety of custom sizes and shapes, creating a custom rug is simple and flexible. Contact your rep to learn more and bring your vision to life.



The molecular strength of type 6,6 nylon delivers greater resilience against matting and resists abrasive wear, keeping carpet looking better longer.

Easier to Maintain

- ✔ XGUARD® Stain Resistant Technology provides long-term stain resistance for our space dye products.
- ✔ ColorSafe® Bleach Resistant Technology resists color fade-out from bleach spills for our space dye products.
- ✔ Moisture-barrier backings are built to withstand aggressive wet cleanings.

Sustainable Solutions

- ✔ Supported with third party verified EPDs and HPDs.
- ✔ Infinity® 2 Modular and rEvolve® II backings are NSF/ANSI 140 Gold Certified and contain recycled content.
- ✔ Recognizing the impact that the built environment can have on Earth's climate and health, Mannington Commercial is improving operations and offsetting cradle-to-gate embodied carbon by 105% on this collection, as part of our commitment to helping customers take positive action through their projects.

Backing Advantages

- ✔ Infinity® 2 and rEvolve® II Modular backings provide exceptional performance with a moisture barrier as well as superior tuft bind and dimensional stability with a limited lifetime warranty.
- ✔ rEvolve® II is a PVC-free modular backing. For additional backing options please visit our website.

TARR

- ✔ Studio Loop Collection carpet was specifically designed with a 3.5 TARR rating for heavy use environments with substantial foot traffic. This includes conference rooms, open office areas and classrooms. Our TARR rating is tested and verified by an independent lab.

Proven by Third-Party Testing | Every carpet we make at Mannington Commercial is third-party tested and proven to exceed industry standards in appearance retention, texture retention, fire safety factors and static generation, and our modular carpet exceeds industry standards in dimensional stability—so you can be sure that the carpet you specify will perform for years to come.



No Moisture Testing Required*

Solutions crafted for high-moisture conditions. Defeat moisture issues with carpet backings that do not require moisture testing*.

We have solutions for broadloom and modular carpet to make moisture worries evaporate. From backing options to adhesives to a dry installation system, explore solutions that defeat moisture concerns while enhancing the performance of your floor.



	Infinity 2 Pressure Sensitive Adhesive	XpressStep™ Spray Adhesive	FreLock Tabs	Integra-2 Adhesive	Ultra Adhesive
Infinity® 2 Modular Backing	✓	✓	✓		
Infinity® 2 MG Modular Backing	✓	✓	✓		
Infinity® 2 MG Cushion Modular Backing	✓	✓			
rEvolve® II PVC-Free Modular Backing	✓	✓			
Integra® HP Broadloom Backing				✓	
UltraBac® RE Broadloom Backing					✓

* Assumes intact vapor barrier, no standing water or stained concrete, no hydrostatic pressure, and for our broadloom backings (Integra® HP and UltraBac® RE) pH levels must never exceed 10. Please refer to our installation instructions for further details.



Edge Effects Wall Base Collection

An architectural accent, creating the elegant effect of a milled wood base without the expensive installation, indentations, scuffs, and abrasions. Requires no nailing, priming, or painting. Co-extruded thermoplastic rubber (type tp) engineered for flexible application to walls, corners, and columns.

40 Colors

16 Styles

In a smooth, matte finish for a flawless look in any room.

7 Profile Heights

Style-dependent, in four thicknesses.

Sustainability

- > FloorScore
- > HPD

Warranty

- > Limited 5-Year Commercial



Cetera

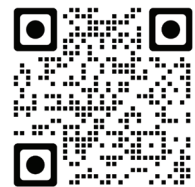


Illusion



Etched

All styles are viewable online.



View Edge Effects Online



Made in the USA
BABAA Compliant

Studio Loop Collection

Style	Sizes	Face Weight	Colors
Amble	12" x 36" (30.48 x 91.44 cm)	22 oz/yd ²	15
Grooveform	12" x 36" (30.48 x 91.44 cm)	22 oz/yd ²	15
Loopfield	12" x 36" (30.48 x 91.44 cm)	17 oz/yd ²	10
Sketchflow	12" x 36" (30.48 x 91.44 cm)	22 oz/yd ²	15
Testing			
Dimensional Stability (Aachen Test)	Passes		
Electrostatic Propensity (AATCC 134)	Less than 3.0 kV		
Radiant Panel (ASTM E648)	≥ 0.45 watts/cm ² , Passes (Class 1)		
Smoke Density (ASTM E662)	≤ 450-Passes		
Methenamine Pill Test (ASTM D2859)	Passes		
Hexapod (ASTM D5252) TARR Rating	3.5		
Environmental Data			
NSF/ANSI 140 Certification	Infinity 2 Modular - Gold / rEvolv II Modular - Gold		
Recycled Content	Contains Recycled Content		
Indoor Air Quality	CRI Green Label Plus Certified		
Product Declarations	Third Party Verified EPD, HPD		
Carbon Offset	105% Cradle to Gate (A1 - A3), visit website for more information		
LEED Scoreboard	May Contribute to LEED credits: Building Product Disclosure & Optimization - EPDs Building Product Disclosure & Optimization - Sourcing Raw Materials Building Product Disclosure & Optimization - Material Ingredients; IEQc2 - Low Emitting Materials		
Manufacturing	Calhoun, Georgia (USA) - ISO 14001 Certified, +Vantage Vinyl Verified Silver		
Warranty			
	Limited Lifetime Wear & Backing Limited 15-Year XGUARD® Stain Resistant Limited 15-Year ColorSafe® Bleach Resistant		



View full collection specs.

- Specifications are based on averages from normal manufacturing tolerances. Such variations do not affect product performance.
- Protective chair pads are recommended under office chairs with roller casters to preserve appearance and avoid premature wear.
- As with all quality carpets, slight variation in color may occur from dye lot to dye lot.
- Backing or other materials may be changed without prior notice when shortages occur or when technological advancements provide improved product performance.
- This product is intended solely for use as an indoor floor covering and is not recommended or sold for any other purpose.
- The inherent characteristics of geometric linear patterns can result in double-dark or double-light lines at the seam and to some extent pattern run-off or bias. This is not a manufacturing defect, and as such, should be considered when selecting a modular carpet installation method.
- Please make your final selection from an actual swatch. To order samples, go to manningtoncommercial.com or call 800.241.2262