



BioSpec® MD

Mannington
COMMERCIAL



Cover: **BioSpec® MD** - Northstar 15506 (Previously Sterling Blue 15312), **Spacia Stone** - Gibson SS5S2603
Above: **BioSpec MD** - Sandtrap 15504 (Previously Toasted Sesame 15333)





BioSpec® MD - Glacier Lake 15523 (Previously New Wedgewood 15329),
Teles Stair Treads - Dew Drop 850





BioSpec® MD - Greystone 15526 (Previously Granite 15425), New Glacier 15364, Mojave 15525 (Previously Talpa 15418)
Talpa 15418; Zucca 15431, Buzzy Bee 15432, Hummingbird 15430



BioSpec® MD

Healthcare facilities are not “one product fits all” places. At Mannington Commercial, we incorporate evidence-based design to create flooring that fits the unique needs of different spaces. Rigorous performance testing ensures BioSpec MD is a high performance, low maintenance flooring solution.

Homogeneous Sheet Construction

Quantum Guard Elite®

- Best in class abrasion resistance
- Easy maintenance
- Stain resistance that endures

68 Colors

- Available in a variety of neutrals & accent colors
- Colors coordinate across our resilient sheet products

0.080” (2.03 mm) Thickness

12-Year Quantum Guard Elite® warranty

105% Carbon Offset

- Recognizing the impact that the built environment can have on Earth’s climate and health, Mannington Commercial is improving operations and offsetting cradle to gate embodied carbon by 105% on our domestically manufactured flooring products as part of our commitment to helping customers take positive action through their projects.



Made in the USA

Beautifully Made in North America

Crafted by a Leader in Resilient Sheet

At Mannington Commercial, we proudly manufacture all our homogeneous sheet right here in North America, including BioSpec MD. By controlling the process from start to finish, from design to material sourcing to delivery, we are able to bring you resilient sheet that is optimized to fit your needs.

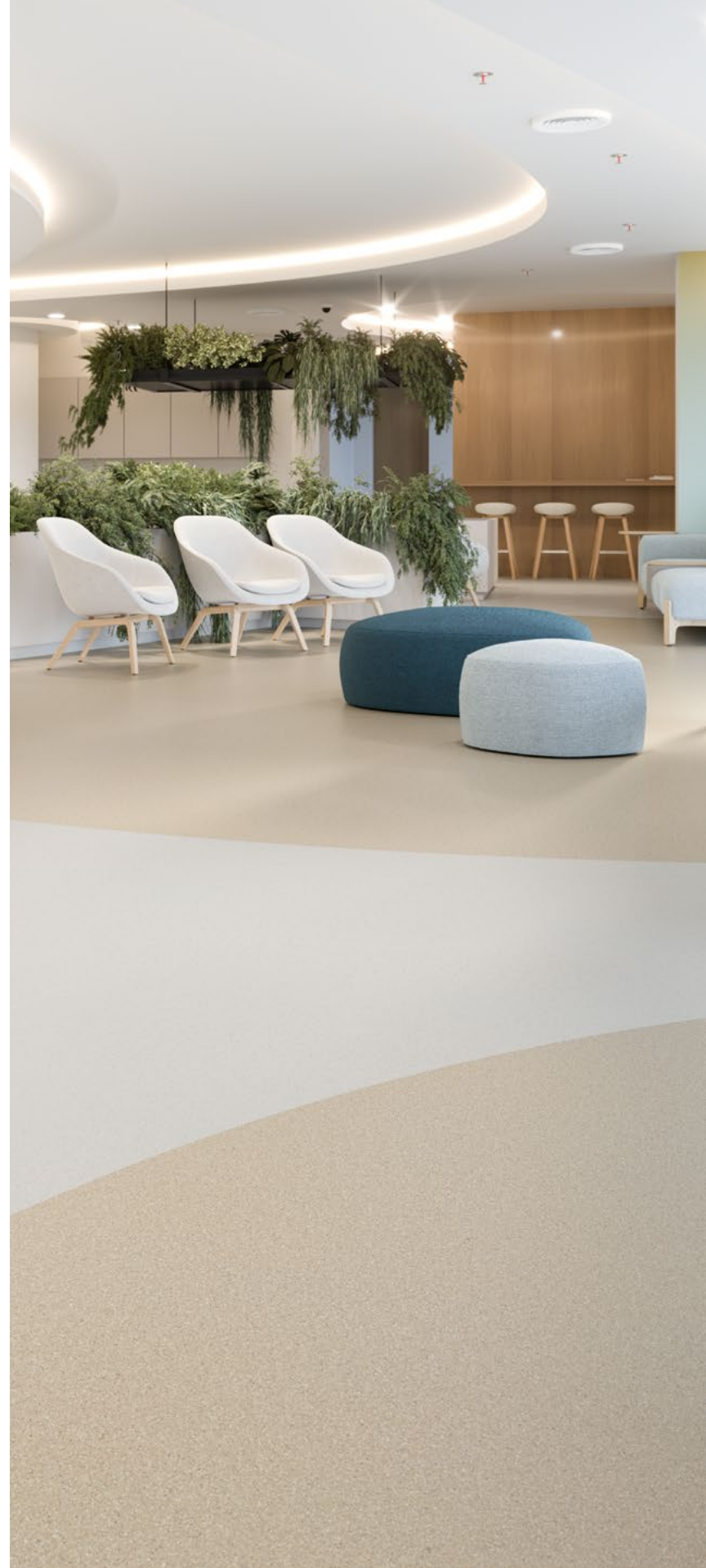
Better Quality, Better Service

- Product is holistically designed and engineered from the ground up
- Proprietary Quantum Guard Elite® technology ensures a tough, easy-to-clean product
- Third party verified HPD and EPD
- A warranty you can count on

Big Picture Benefits

- High-quality manufacturing jobs that sustain American communities
- Drastically reduced carbon footprint of domestic vs. international transport
- Adherence to practices ensuring workers' safety and environmental preservation
- Dedication to leading the industry in responsible, high-quality manufacturing

Crafted with Purpose.



Design Solutions



Design Solutions

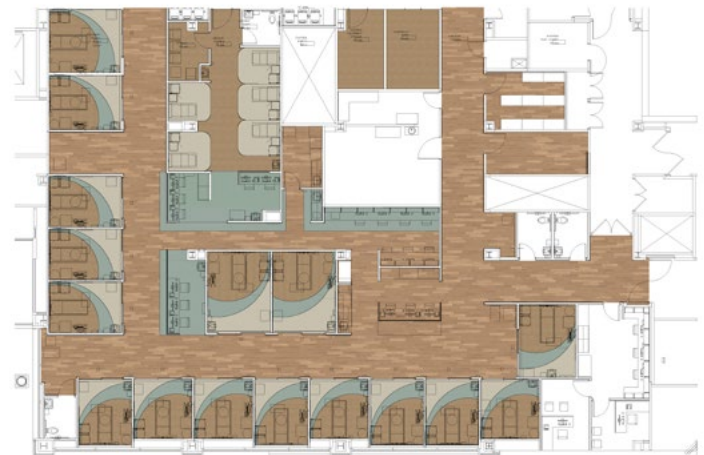
Whether you're looking for design support from the start of a project or in the final phase, Mannington's Design Solutions team can help. Our team of designers is here to support you, our customers, through every step of the design process, from concept to installation.

Your Vision Realized

Our team of designers with diverse backgrounds in interior design, graphic design and textile design will work with you to provide solutions, knowledge and options to simplify the design process and bring your vision to life.

Deliverables

- > Product Palettes
- > 2D and 3D Renderings
- > Composites
- > Configurations
- > Finished Plans
- > Rendered Floor Plan
- > Estimates
- > Installation Diagrams
- > Revit Files
- > Construction Documents



Defeat Damp Spaces

Your job just got easier. With our comprehensive moisture solutions for Sheet, you can defeat the most extreme high moisture conditions.

Best Solutions for:

Slabs with Intact Vapor Barrier (Class B or better)

Quick pH Testing Required**

Adhesive	pH
MoistureLoc	12
QuickStix® with Moisture Resistant Primer**	12

**** Conditions**

Intact Class B or better vapor barrier | No hydrostatic pressure | No standing water or visible water stains | Slab is at least 45 days old

Best Solutions for:

Unknown Slab Conditions

Moisture Testing Required

Adhesive	RH%	MVER	pH
M-Guard V-88 (with IVB)	95	10	12
M-Guard V-88 (no IVB)	90	10	8
MoistureLoc	95	10	12
XpressStep Sheet	95	8	11
QuickStix® with Premium Universal Primer (2 coats)	95	10	12

IVB = Intact Vapor Barrier

IdealBase® Specialty Wall Base

Infection control and providing a sanitary environment in healthcare settings is crucial. That's why we created IdealBase, a 6.25" wall base that extends 2" onto the floor so it can be welded to the floor covering to create a sanitary transition up the wall. IdealBase replaces traditional flash coving, providing cost savings and enhanced performance, all in an aesthetically clean look that complements your room design.

Benefits

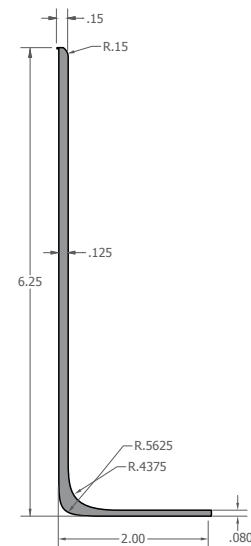
- > IdealBase installation eliminates dye-lot concerns on corners and provides simpler, more forgiving and faster installation than traditional flash cove methods
- > Specially engineered for use with homogeneous and heterogeneous sheet (.080"), BioSpec Armor® (.100") and rubber sheet (.118").
- > TP construction
- > Scuff and scratch resistant, will not fade or crack
- > Available in 8' lengths for less vertical seams and 10 colors to coordinate with our most popular resilient flooring products

Sustainability

- > FloorScore Certified; CDPH v1.1 - 2010
- > mindful MATERIALS
- > HPD



[View IdealBase Online](#)



**Shown in .080". Also available in .100" and .118"*

BioSpec® MD Accessories

Style	Code	LRV	Weld Rod	Wall Base	IdealBase®
Alpaca (previously Linen 15420)	15517	59.8	842354 Beige	150 Nougat	244 Off White
Balsa	15359	26.8	842396 Balsa	305 Camel	244 Off White
Basic Black	15383	7.2	842352 Off Black	727 Thunder	701 Black
Bedrock	15369	20.6	842407 Bedrock	597 Mocha	204 Gray
Bison	15524	13.6	842494 Umber	504 Pecan	112 Sandy Tan
Bisque	15202	48	842354 Beige	118 Desert Sand	168 Bluish White
Blue Ridge	15376	37.7	842412 Blue Ridge	113 Morning Mist	168 Bluish White
Blue Saturn (previously Denim 15377)	15521	25.5	842359 Medium Blue	970 Wedgewood	401 White
Bok Choy	15507	47	842335 Green Tea	210 Frosted Jade	030 Beach Sand
Breezy	15522	54.3	842326 Sterling	170 Bright White	401 White
Brownstone	15385	18.7	842526 Warm Ash	597 Mocha	527 Clay
Buttermilk	15360	44.8	842410 Buttermilk	150 Nougat	168 Bluish White
Buzzy Bee	15432	48.1	842514 Lemon	102 Lemoncurd	401 White
Cherry Tomato	15508	12.5	842520 Crimson	966 Geranium	401 White
Cherrywood	15357	12.6	842467 Cinnamon	968 Cafe	244 Off White
Classic Navy (previously New Navy 15354)	15509	15.7	842346 Cornflower	505 True Blue	663 Sky Gray
Cool Beige	15240	47.7	842354 Beige	508 Tweed	244 Off White
Deep Suede	15345	24.6	842371 Deep Suede	206 Light Beige	527 Clay
Ecru	15362	35.4	842485 Bone Beige	508 Tweed	112 Sandy Tan
Eggplant	15381	14	842415 Eggplant	965 Eggplant	663 Sky Gray
Fawn	15419	39.4	842472 Ash Gray	674 Carmine Gray	527 Clay
Fjord	15503	30.7	842412 Blue Ridge	672 Gray Blue	663 Sky Gray
Flint	15384	30.6	842381 Heather Beige	113 Morning Mist	663 Sky Gray
Frostwork	15516	67.5	842372 Bright White	170 Bright White	168 Bluish White
Gargoyle (previously Stone Grey 15328)	15515	23.4	842332 Stone Gray	198 Deep Space	663 Sky Gray
Glacier Lake (previously New Wedgewood 15329)	15523	41.1	842359 Medium Blue	970 Wedgewood	401 White
Golden Harvest	15513	53.3	842354 Beige	508 Tweed	244 Off White
Golden Oak	15363	23.8	842396 Balsa	860 Dark Bronze	244 Off White
Grassland	15366	38.8	842400 Grassland	088 Sea Green	168 Bluish White
Gray Flannel	15370	21.2	842413 Gray Flannel	672 Gray Blue	701 Black
Greystone (previously Granite 15425)	15526	34.9	842317 Light Gray	628 Ore	663 Sky Gray
Haystack (previously Flax 15361)	15519	33.6	842485 Bone Beige	503 Ginger	527 Clay
Hojicha	15417	31.7	842381 Heather Beige	508 Tweed	209 Gray Beige
Horizon Blue	15378	37.8	842409 Horizon Blue	920 Horizon	168 Bluish White
Hummingbird	15430	16	842512 Magenta	170 Bright White	168 Bluish White
Hush (previously Bright White 15246)	15511	67.5	842322 Off White	137 Pearl	168 Bluish White
Island Sky	15434	13.5	842516 Ultramarine	092 Bright Blue	663 Sky Gray
Jonquil	15356	30.5	842414 Jonquil	545 Straw	401 White
Koala	15505	35.7	842524 Timberwolf	192 Jet Gray	204 Gray

BioSpec® MD Accessories

Style	Code	LRV	Weld Rod	Wall Base	IdealBase®
Lime	15422	30	842482 Lime Green	922 Silver Pine	168 Bluish White
Lunar Rock	15518	39.7	842401 Techno Gray	208 Light Gray	112 Sandy Tan
Maneto Meadow	15437	31.8	842518 Shamrock	137 Pearl	168 Bluish White
Midnight	15424	20.1	842358 Darker Gray	727 Thunder	701 Black
Mirage	15520	47.8	842326 Sterling	970 Wedgewood	401 White
Mojave (previously Talpa 15418)	15525	45.4	842489 Micah	508 Tweed	527 Clay
New Glacier	15364	46.9	842361 Cream	113 Morning Mist	663 Sky Gray
New Mineral Gray	15365	36.8	842472 Ash Gray	110 Irish Gray	663 Sky Gray
Niagra Blue	15407	31.9	842452 Niagra	137 Pearl	168 Bluish White
Northstar (previously Sterling Blue 15312)	15506	48.5	842317 Light Gray	190 Jackalope	663 Sky Gray
Olivia	15367	17.2	842484 Greige	242 Olive	209 Gray Beige
Oyster White	15201	55.4	842322 Off White	170 Bright White	244 Off White
Peacock	15435	24.3	842517 Cyan	711 Shallow Sea	030 Beach Sand
Peppercorn (previously Iron 15368)	15502	14.7	842352 Off Black	660 Rocky	701 Black
Pistachio	15510	56.8	842333 Sage	208 Light Gray	168 Bluish White
Portobello	15512	24.9	842526 Warm Ash	5030 Ginger	527 Clay
Salt	15421	59.4	842372 Bright White	113 Morning Mist	663 Sky Gray
Sandrift	15203	51.3	842354 Beige	205 Cream	244 Off White
Sandtrap (previously Toasted Sesame (15333)	15504	46.1	842336 Sesame	305 Camel	244 Off White
Sapphire	15409	45.1	842454 Sapphire	520 Dusk Blue	663 Sky Gray
Scottish Thistle	15429	13.6	842511 Orchid	965 Eggplant	401 White
Scuba	15500	40.9	842448 Aquatic	170 Bright White	401 White
Snow Pea	15436	46.8	842519 Artichoke	137 Pearl	168 Bluish White
Snowy Owl	15514	56.9	842361 Cream	113 Morning Mist	244 Off White
Spearmint	15375	43.2	842333 Sage	922 Silver Pine	168 Bluish White
Tannenbaum	15501	33	842488 Dock Blue	208 Light Gray	244 Off White
Techno Gray	15371	27.7	842401 Techno Gray	088 Sea Green	030 Beach Sand
Twilight Twinkle	15433	9.9	842515 Liberty	099 Armada	663 Sky Gray
Zucca	15431	30.2	842513 Papaya	479 Orange Crate	244 Off White



QUANTUM GUARD®
elite

Success Is in Our Science

Quantum Guard Elite is a proven, patented technology that provides the complete performance solution for homogeneous sheet flooring.

- Engineered to trap less dirt, delivering ease of cleaning and reduced maintenance costs
- Industry-leading stain resistance outperforms competing products
- Excellent slip resistance for enhanced safety
- Advanced light resistance keeps colors beautiful

Cleans Better Than Competitors

Quantum Guard Elite

Leading Competitor

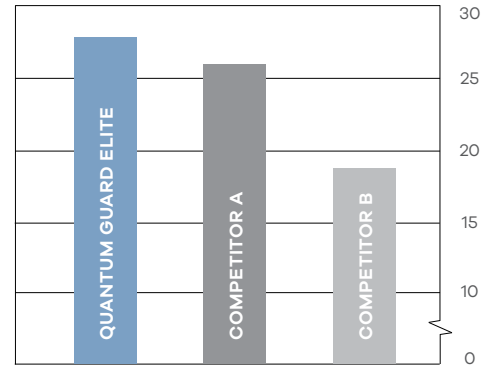


Advanced urethane chemistry and an optimized texture make resilient sheet with Quantum Guard Elite easier to clean than competitors. *(Results after 10 passes with a wet microfiber mop on soiled floor.)*

Warranted to Work

Products with Quantum Guard Elite feature our Limited Quantum Guard Elite Wear Warranty and Limited Commercial Warranty.

Excellent Slip Resistance



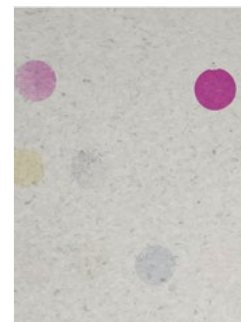
BRITISH PENDULUM NUMBER

Quantum Guard Elite is engineered to provide greater slip resistance, improving the safety of the facility by helping reduce slip and fall hazards. *(Results from testing with the British Pendulum Tester, ASTM E303.)*

Industry-Leading Stain Resistance

Quantum Guard Elite

Leading Competitor



With protective compounds from the aerospace industry and dentistry, Quantum Guard Elite leads the industry in resistance to stains, including tough medical staining agents. *(Results after applying multiple medical staining agents to flooring, waiting one hour and wiping with an alcohol wipe.)*

Style	BioSpec® MD
Construction	Homogeneous Sheet (Non-ortho phthalate construction)
Classification	ASTM F1913 Sheet Vinyl Floor Covering without Backing
Total Thickness	0.080" (2.03 mm)
Wear Layer	Quantum Guard Elite®
Width	6'6" (2 m)
Colors	68
Pattern Repeat	Random repeat, reverse sheet for seaming
Packaging	30-73 yd ² (25.1-61.04 m ²) (73 yd ² roll is approx. 100 lineal feet)
Weight	6.5 lbs/yd ² (2.948 kg/m ²)
Adhesive	Porous & Non-porous Substrates: V-95 Full Spread, 2-part Epoxy MoistureLoc Full Spread, One-Component V-88 Full Spread XpressStep for LVT & Sheet Vinyl Full Coverage Spray Note: Must use V-95, MoistureLoc, QuickStix or XpressStep adhesive under hospital beds and heavy rolling load areas. In more abusive conditions such as areas subject to dragging force, direct sunlight or where topical moisture would be a concern, only V-95, MoistureLoc or QuickStix should be used.
QuickStix®	Available with QuickStix® pre-applied adhesive, reducing time and labor required to install the flooring. QuickStix® floors can be used immediately after installation, even in extreme moisture areas.
Seam Method	Mannington Commercial Weld Rods or MCS-42 Chemical Seam Sealer. Mannington Seam Coater Pen for high traffic areas. Note: Heat welding is the recommended procedure for healthcare and high traffic applications.
Testing	
HUD/FHA	Meets / Exceeds
ADAG (American Disability Act Guidelines)	Passes
Flexibility (ASTM F137)	Passes - 11/2" Mandrel - No Crack/Break
Static Load (ASTM F970)	Passes - Residual Indent ≤ 0.005"
Static Load (ASTM F970 mod.)	Passes - 2,000 PSI; Residual Indent ≤ 0.005"
Rolling Resistance/Caster Chair (ISO 4918)	25,000 Cycles, No Significant Change
Short Term Residual Indentation (ASTM F1914/F1303)	Passes - Must be < 0.007"
Flooring Radiant Panel (ASTM E648)	Passes - Class 1; ≥ 0.45 watts/cm ²
Smoke Density (ASTM E662)	Passes - ≤ 450
Slip Resistance (ASTM C1028, Dry)	Passes - ≥ 0.5 Leather; 0.6 Rubber
Acoustic IIC (ASTM E492)	50 - 6" Concrete with Drop Ceiling
Acoustic STC (ASTM E90)	63 - 6" Concrete with Drop Ceiling
Resistance to Light (ASTM F1515)	Passes - < 8 Delta E Color Change
Chemical Resistance (ASTM F925)	Passes - No More Than Slight Change
Resistance to Heat (ASTM F1514)	Passes - < 8 Delta E Color Change
Resistance to Mold/Mildew (ASTM G21/E2180)	Passes - No More Than Slight Change
Environmental Data	
Indoor Air Quality	FloorScore Certified; CDPH v1.2-2017
Product Declarations	Third party verified EPD, HPD
Carbon Offset	105% Cradle to Gate (A1-A3), see website for additional information
LEED	May contribute to LEED credits: Building Product Disclosure & Optimization - EPDs Building Product Disclosure & Optimization - Sourcing Raw Materials; Building Product Disclosure & Optimization - IEQc2 - Low Emitting Materials
mindful MATERIALS	Visit mindfulmaterials.com for current transparency information Salem, NJ (USA) - ISO 14001 EMS & ISO 9001 QMS Registered, +Vantage Vinyl Verified Silver
Manufacturing	
Warranty	
	Limited 12-Year Commercial Warranty Limited 12-Year Quantum Guard Elite® Wear Warranty

Note: Visual/Color variations can occur from roll to roll. This variation does not affect product performance. Dye lot maximum of 1,000SY.