



White Sands Harmony Collection

Mannington
COMMERCIAL



Cover: Tesselate - Lake 5103

Above: Petroglyph - Haven 5100, Realities III - Ironside Oak Muted 5701R





Craft Your Oasis

Step into the serene world of the White Sands Harmony Collection. Inspired by the sacred geometry and breathtaking landscapes of White Sands National Monument, this sheet collection brings a sense of tranquil calm and rejuvenation to any space. By exploring the delicate balance between symmetry and asymmetry found in nature, the intersecting paths in White Sands Harmony mirror our connection with the celestial realm, creating a healing atmosphere perfect for healthcare facilities.





White Sands Harmony Petroglyph - Oasis 5000, White Sands LVT Glyph - Oasis WS100

Beautifully Made in North America

Crafted by a Leader in Resilient Sheet

At Mannington Commercial, we proudly manufacture all our heterogeneous sheet right here in North America, including White Sands Harmony. By controlling the process from start to finish, from design to material sourcing to delivery, we are able to offer resilient sheet that is optimized to fit your needs.

Better Quality, Better Service

- Product is holistically designed and engineered from the ground up
- Proprietary Quantum Guard Elite® technology ensures a durable, yet easy-to-clean product.
- Third party verified HPD and EPD
- A warranty you can count on

Big Picture Benefits

- High-quality manufacturing jobs that sustain American communities
- Drastically reduced carbon footprint of domestic vs. international transport
- Adherence to practices ensuring workers' safety and environmental preservation
- Dedication to leading the industry in responsible, high-quality manufacturing



Made in the USA





Design Solutions

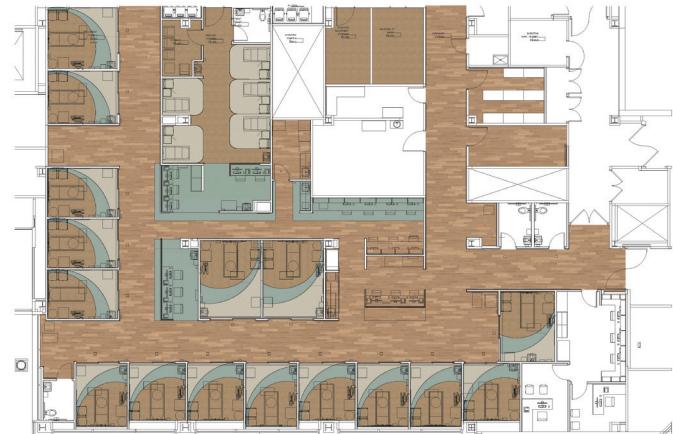
Whether you're looking for design support from the start of a project or in the final phase, Mannington's Design Solutions team can help. Our team of designers is here to support you, our customers, through every step of the design process, from conception to installation.

Your Vision Realized

Our team of designers with diverse backgrounds in interior design, graphic design and textile design will work with you to provide solutions, knowledge and options to simplify the design process and bring your vision to life.

Deliverables

- > Product Palettes
- > 2D and 3D Renderings
- > Composites
- > Configurations
- > Finished Plans
- > Rendered Floor Plan
- > Estimates
- > Installation Diagrams
- > Revit Files
- > Construction Documents





White Sands Harmony Tessellate - Lake 5103, **White Sands LVT Crystalline Lake** - SWS210

Advantages of Multiple Width Sheet Goods

As a domestic manufacturer of commercial sheet, Mannington Commercial purposefully crafts multiple width solutions for the healing environment.

Benefits

- > Significant cost savings can be gained through the use of multiple width sheet goods as compared to a single 6'6" width.
- > Less Seams = Better Installation Integrity. A floor with fewer seams is easier to clean and minimizes stress points across the installation.
- > Multiple width options allow for seamless corridors as they are typically 8' wide. Seams can be strategically positioned away from patient beds and heavy traffic pathways to minimize seams and maximize performance.
- > Our design solutions team can insert roll manufacturing sequence into your floor design. This advantage will dictate exact roll use within a plan—excellent for designer, end-user and installer!

Product Information

- > Made in the USA
- > Mannington Commercial is the only commercial manufacturer of multiple width sheet vinyl
- > All Mannington Commercial heterogeneous sheet is available in 6', 9' & 12' width rolls
- > Multiple width roll strategy can be used with new construction and renovation opportunities
- > Heat or chemical weld options available
- > Mannington Commercial has multiple adhesive solutions that take into consideration substrate moisture & immediate occupancy requirements.



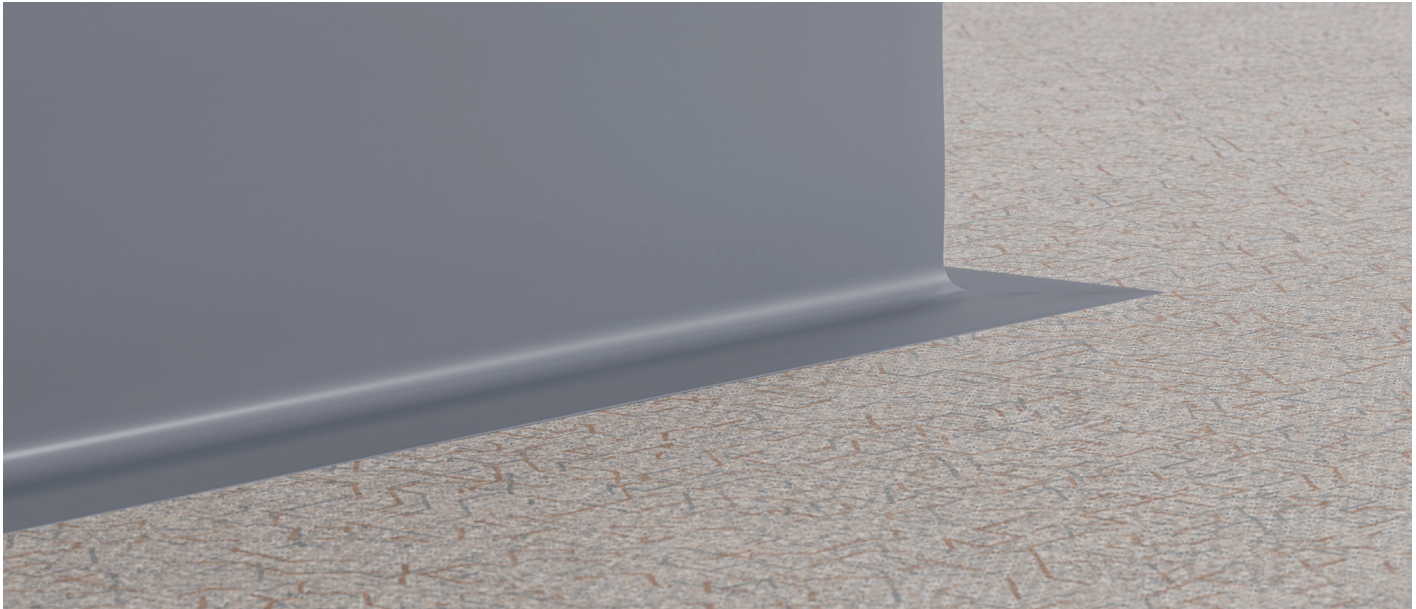
Wider Sheets = Less Seams = More Savings

Installation Cost Savings Comparison - 6'6" wide sheet VS. 9' & 12' wide sheets

Scope of Work	Competitor 6'6" wide sheet welded seams (linear feet)	Mannington 9' & 12' wide sheet welded seams (linear feet)
Patient Rooms	1,336	524
Corridors	971	800
Nurse Stations & Misc.	355	62
Total Seams (linear feet)	2,662	1,386
Total cost for heat welded seams*	\$13,310	\$6,930 = 52% savings over the 6'6" sheet width option

*\$5 per LF is national average for heat welded seams

IdealBase® Specialty Wall Base



Infection control and providing a sanitary environment in healthcare settings is crucial. That's why we created IdealBase, a 6.25" wall base that extends 2" onto the floor so it can be welded to the floor covering to create a sanitary transition up the wall. IdealBase replaces traditional flash coving, providing cost savings and enhanced performance, all in an aesthetically clean look that complements your room design.



Benefits

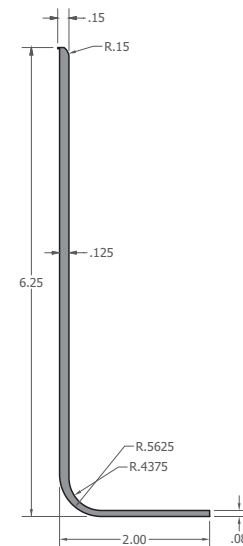
- > IdealBase installation eliminates dye-lot concerns on corners and provides simpler, more forgiving and faster installation than traditional flash cove methods
- > Specially engineered for use with homogeneous and heterogeneous sheet (.080"), BioSpec Armor® (.100") and rubber sheet (.118").
- > TP construction
- > Scuff and scratch resistant, will not fade or crack
- > Available in 8' lengths for less vertical seams and 10 colors to coordinate with our most popular resilient flooring products

Sustainability

- > FloorScore Certified; CDPH v1.1 - 2010
- > mindful MATERIALS
- > HPD



[View IdealBase Online](#)



**Shown in .080". Also available in .100" and .118"*

Defeat Damp Spaces

Your job just got easier. With our comprehensive moisture solutions for Sheet, you can defeat the most extreme high moisture conditions.

Best Solutions for:
Slabs with Intact Vapor Barrier (Class B or better)
Quick pH Testing Required**

Adhesive	pH
MoistureLoc	12
Quickstix® with Moisture Resistant Primer**	12

****Conditions**

Intact Class B or better vapor barrier | No hydrostatic pressure | No standing water or visible water stains | Slab is at least 45 days old

Best Solutions for:
Unknown Slab Conditions
Moisture Testing Required

Adhesive	RH% M	VER	pH
M-Guard V-88 (with IVB)	95	10	12
M-Guard V-88 (no IVB)	90	10	8
MoistureLoc	95	10	12
XpressStep Sheet	95	8	11
QuickStix® with Premium Universal Primer (2 coats)	95	10	12

IVB = Intact Vapor Barrier



Success Is in Our Science

Introducing Quantum Guard Elite, the patent-pending technology that provides the complete performance solution for heterogeneous sheet flooring.

- Engineered for ease of cleaning and reduced maintenance costs
- Highest abrasion resistance in the industry
- Advanced stain resistance
- Excellent slip resistance

Cleans Better Than Competitors

Quantum Guard Elite

Leading Competitor

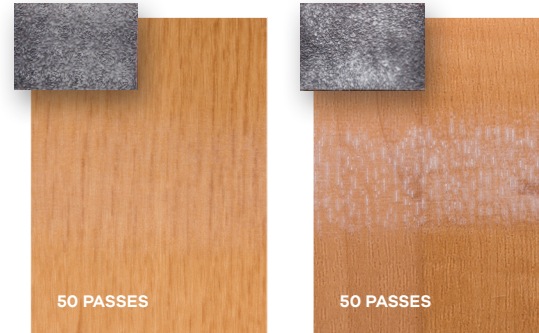


Advanced urethane chemistry and an optimized texture make resilient sheet with Quantum Guard Elite easy to clean. *(Results after 10 passes with a wet microfiber mop on soiled floor.)*

Best-in-Class Abrasion Resistance

Quantum Guard Elite

Leading Competitor

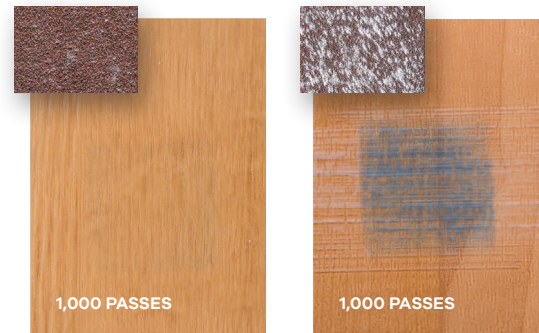


Our proprietary blend of aluminum oxide particles is suspended evenly through the urethane top coat, giving the industry's best abrasion resistance. *(Results after 50 passes with sanding block.)*

Stain Resistance That Endures

Quantum Guard Elite

Leading Competitor

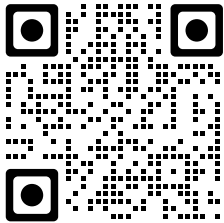


With new protective compounds from the aerospace industry and dentistry, Quantum Guard Elite's stain resistance performs over time at the same high level as the day it was installed. *(Results after 1,000 passes with a sanding block, staining with a blue Sharpie and cleaning with an alcohol wipe.)*

Warranted to Work

Products with Quantum Guard Elite feature our Limited Quantum Guard Elite Wear Warranty and Limited Commercial Warranty.

Style	Petroglyph, Tesselate
Construction	Heterogeneous Sheet (Non-ortho phthalate construction)
Classification	ASTM F1303, Type 1, Grade 1, Class B
Overall Thickness	0.080" (2.03 mm)
Wear Layer	Quantum Guard Elite®
Wear Layer Thickness	0.020" (0.51 mm)
Colors	18
Width	6' (1.83m) 9' (2.75 m) 12' (3.66m)
Environmental Data	
Indoor Air Quality	FloorScore Certified; CDPH v1.1-2010
Product Declarations	Third party verified EPD, HPD
Carbon Offset	105% Cradle to Gate (A1-A3), see website for additional information
LEED	May contribute to LEED credits: Building Product Disclosure & Optimization - EPDs Building Product Disclosure & Optimization - Sourcing Raw Materials; Building Product Disclosure & Optimization - IEQc2 - Low Emitting Materials
mindful MATERIALS	Visit mindfulmaterials.com for current transparency information
Manufacturing	Salem, NJ (USA) - ISO 14001 EMS Registered, +Vantage Vinyl Verified Silver
Warranty	
	Limited 15-Year Commercial Warranty Limited 15-Year Quantum Guard Elite® Wear Warranty



View full collection specs.